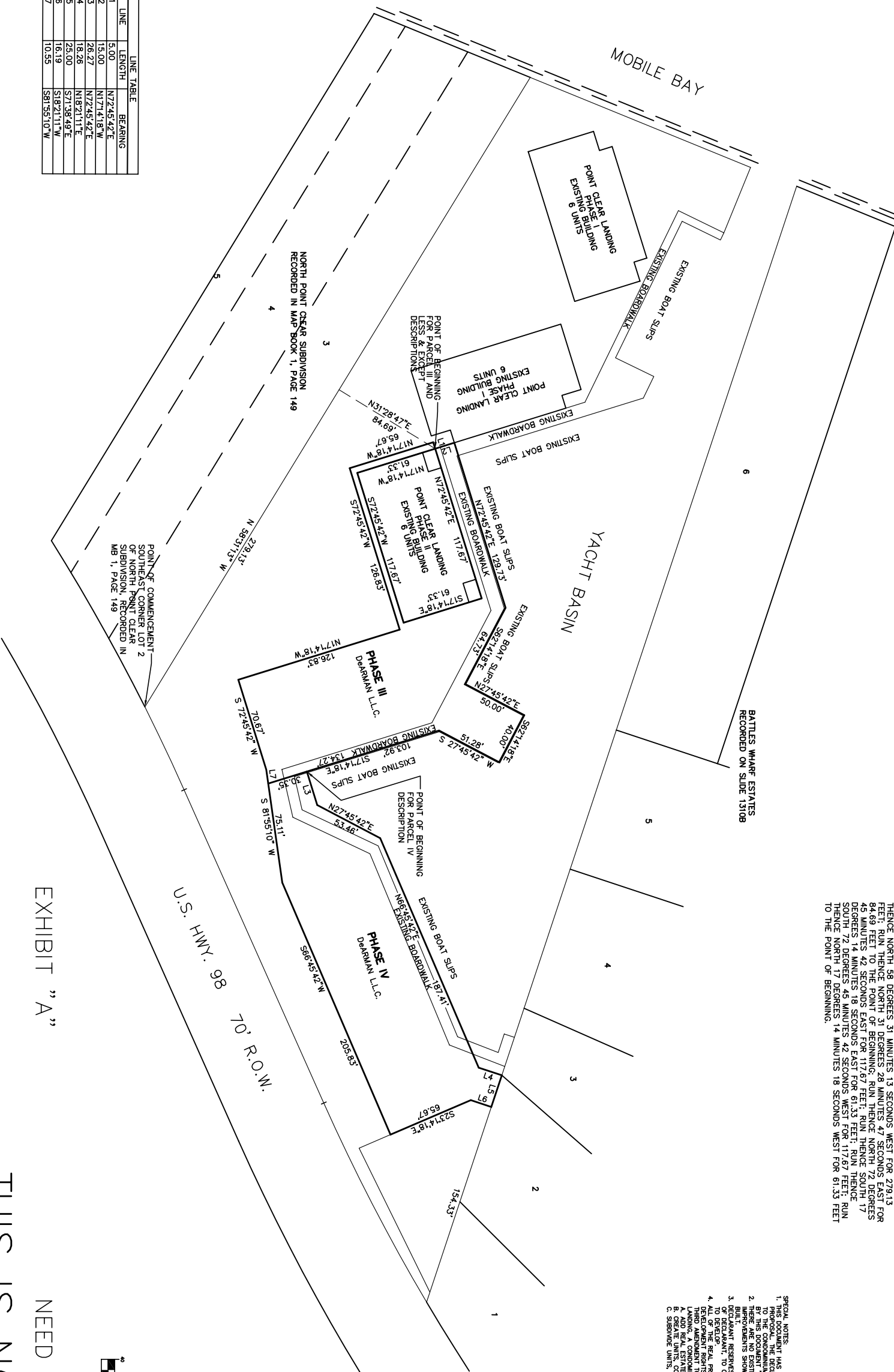


THIS IS NOT A SURVEY
NEED NOT BE BUILT

| LINE | LENGTH | BEARING |
|------|--------|-------------|
| L1 | 5.00 | N72°45'42"E |
| L2 | 15.00 | N17°14'18"W |
| L3 | 26.27 | N72°45'42"E |
| L4 | 18.26 | N18°21'11"E |
| L5 | 25.00 | S71°38'49"E |
| L6 | 16.19 | S18°21'11"W |
| L7 | 10.55 | S81°55'10"W |



PHASE III
 COMMENCE AT THE WEST RIGHT-OF-WAY LINE OF U.S. HIGHWAY NO. 98, WHERE IT INTERSECTS THE SOUTHEAST CORNER OF LOT 2 OF NORTH POINT CLEAR SUBDIVISION AS RECORDED IN MAP BOOK 1, PAGE 149 IN THE OFFICE OF THE JUDGE OF PROBATE IN BALDWIN COUNTY, FLORIDA. RUN THENCE NORTH 58 DEGREES 31 MINUTES 13 SECONDS WEST FOR 279.13 FEET; RUN THENCE NORTH 31 DEGREES 28 MINUTES 47 SECONDS EAST FOR 84.69 FEET TO THE POINT OF BEGINNING; RUN THENCE NORTH 17 DEGREES 14 MINUTES 18 SECONDS WEST FOR 15.00 FEET; RUN THENCE NORTH 72 DEGREES 45 MINUTES 42 SECONDS EAST FOR 129.73 FEET; RUN THENCE SOUTH 62 DEGREES 14 MINUTES 18 SECONDS EAST FOR 64.73 FEET; RUN THENCE NORTH 72 DEGREES 49 MINUTES 42 SECONDS EAST FOR 50.00 FEET; RUN THENCE NORTH 27 DEGREES 45 MINUTES 42 SECONDS WEST FOR 40.00 FEET; RUN THENCE SOUTH 27 DEGREES 45 MINUTES 42 SECONDS WEST FOR 51.28 FEET; RUN THENCE SOUTH 17 DEGREES 14 MINUTES 18 SECONDS EAST FOR 134.27 FEET; RUN THENCE SOUTH 81 DEGREES 55 DEGREES 45 MINUTES 42 SECONDS WEST FOR 70.67 FEET; RUN THENCE NORTH 17 DEGREES 14 MINUTES 18 SECONDS WEST FOR 126.83 FEET; RUN THENCE SOUTH 72 DEGREES 49 MINUTES 42 SECONDS WEST FOR 126.83 FEET; RUN THENCE NORTH 17 DEGREES 14 MINUTES 18 SECONDS WEST FOR 61.33 FEET TO THE POINT OF BEGINNING.

PHASE IV
 COMMENCE AT THE WEST RIGHT-OF-WAY LINE OF U.S. HIGHWAY NO. 98, WHERE IT INTERSECTS THE SOUTHEAST CORNER OF LOT 2 OF NORTH POINT CLEAR SUBDIVISION AS RECORDED IN MAP BOOK 1, PAGE 149 IN THE OFFICE OF THE JUDGE OF PROBATE IN BALDWIN COUNTY, FLORIDA. RUN THENCE NORTH 58 DEGREES 31 MINUTES 13 SECONDS WEST FOR 279.13 FEET; RUN THENCE NORTH 31 DEGREES 28 MINUTES 47 SECONDS EAST FOR 84.69 FEET; RUN THENCE NORTH 17 DEGREES 14 MINUTES 18 SECONDS WEST FOR 15.00 FEET; RUN THENCE NORTH 72 DEGREES 45 MINUTES 42 SECONDS EAST FOR 129.73 FEET; RUN THENCE SOUTH 62 DEGREES 14 MINUTES 18 SECONDS EAST FOR 64.73 FEET; RUN THENCE NORTH 72 DEGREES 49 MINUTES 42 SECONDS EAST FOR 50.00 FEET; RUN THENCE NORTH 27 DEGREES 45 MINUTES 42 SECONDS WEST FOR 40.00 FEET; RUN THENCE SOUTH 27 DEGREES 45 MINUTES 42 SECONDS WEST FOR 51.28 FEET; RUN THENCE SOUTH 17 DEGREES 14 MINUTES 18 SECONDS EAST FOR 134.27 FEET; RUN THENCE SOUTH 81 DEGREES 55 DEGREES 45 MINUTES 42 SECONDS WEST FOR 70.67 FEET; RUN THENCE NORTH 17 DEGREES 14 MINUTES 18 SECONDS WEST FOR 126.83 FEET; RUN THENCE SOUTH 72 DEGREES 49 MINUTES 42 SECONDS WEST FOR 126.83 FEET; RUN THENCE NORTH 17 DEGREES 14 MINUTES 18 SECONDS WEST FOR 61.33 FEET TO THE POINT OF BEGINNING.

- SPECIAL NOTES:**
1. PROPOSAL HAS NOT BEEN EXECUTED NOR RECORDED AND IS ONLY A PROPOSAL. THE DECLARANT DOES NOT COMMIT TO SUBMIT THE PROPERTY TO THE CONDOMINIUM FORM OF OWNERSHIP. THE IMPROVEMENTS CONTINGENT UPON THE COMPLETION OF THE CONDOMINIUM FORM OF OWNERSHIP.
 2. THERE ARE NO EXISTING COMPLETED IMPROVEMENTS ON THE PROPERTY. ALL IMPROVEMENTS SHOWN ARE CONTINGENT. THE IMPROVEMENTS NEED NOT BE COMPLETED TO COMPLETE ONLY THE PHASE OR PHASES WHICH IT ELECTS.
 3. DECLARANT RESERVES THE RIGHT AND THE OPTION, IN THE SOLE DISCRETION OF DECLARANT, TO COMPLETE ONLY THE PHASE OR PHASES WHICH IT ELECTS.
 4. ALL OF THE REAL PROPERTY DESCRIBED ON THE PLANS IS SUBJECT TO DEVELOPMENT RIGHTS AND SPECIAL DECLARANT RIGHTS AS SET OUT IN THE LIMITED COMMON ELEMENTS AND SPECIAL DECLARANT RIGHTS AND RESERVATIONS TO THE DECLARATION OF CONDOMINIUM.
 5. A ADD REAL ESTATE TO THE CONDOMINIUM.
 6. CREATE UNITS, COMMON ELEMENTS OR LIMITED COMMON ELEMENTS.
 7. SUBDIVIDE UNITS OR COMMON ELEMENTS TO COMMON ELEMENTS.

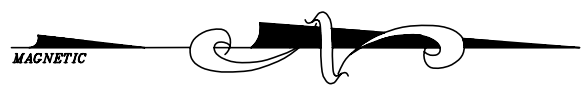
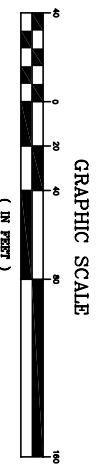


EXHIBIT "A"

THIS IS NOT A SURVEY
NEED NOT BE BUILT

| | |
|-------------------|--|
| PROJECT NAME | PHASE III & IV POINT CLEAR LANDING, A CONDOMINIUM |
| SHEET DESCRIPTION | SUBSEQUENT PHASE DESCRIPTIONS |
| CLIENT | DeARMAN L.L.C. |
| PROJECT NO. | 962700.50 |
| NO. | 1 |
| OF | 6 |
| SHEETS | |

Volkert & Associates, Inc.
 Engineers • Surveyors • Planners

| | |
|----------|---------|
| DESIGNED | MSP |
| DETAILED | MSP |
| CHECKED | MSP |
| DATE | 3-11-10 |

| NO. | DATE | APPR. | REVISIONS |
|-----|------|-------|-----------|
| | | | |
| | | | |

© 2010 VOLKERT & ASSOCIATES, INC.
 CONSULTING ENGINEERS ~ PH. 251-968-7551
 316 S. MCKENZIE ST. - FOLEY, AL 36535